

**Product Evaluation Report**

**Report No.:** FL-41130.4

**Date:** July 1, 2023

Product Category	Sub Category	Manufacturer	Product Name
Exterior Doors	Swinging Exterior Door Assemblies	DKS Steel Door & Frame Systems, Inc. 2142 Tubeway Ave. Commerce, CA 90040 (323) 888-7763	DKS Series 1800 Steel Commercial Single Door Inswing / Outswing "Impact"

**Scope:** This is a Product Evaluation report issued by R W Building Consultants, Inc. and Lyndon F. Schmidt, P.E. for DKS Steel Door & Frame Systems, Inc. based on Rule Chapter No. 61G20-3, Method 1D of the State of Florida Product Approval, Department of Business & Professional Regulation.

RW Building Consultants and Lyndon F. Schmidt, P.E. do not have nor will acquire financial interest in the company manufacturing or distributing the product or in any other entity involved in the approval process of the product named herein.

**Limitations:**

1. This product has been evaluated and is in compliance with the 8th Edition (2023) Florida Building Code (FBC) structural requirements including the "High Velocity Hurricane Zone" (HVHZ).
2. Product anchors shall be as listed and spaced as shown on details. Anchor embedment to base material shall be beyond wall dressing or stucco.
3. When used in the "HVHZ" this product complies with Section 1626 of the Florida Building Code and does not require an impact resistant covering.
4. When used in areas requiring wind borne debris protection this product complies with FBC Sections 1609.1.2 & R301.2.1.2 and does not require an impact resistant covering. This product meets missile level "D" and includes Wind Zone 4 as defined in ASTM E 1996 and FBC Sections 1609.1.2.2 & R301.2.1.2.1.
5. Site conditions that deviate from the details of drawing FL-41130.4 require further engineering analysis by a licensed engineer or registered architect.
6. This product does not meet the water infiltration requirements for the "HVHZ" and shall be installed only in non-habitable areas or at habitable locations protected by an overhang or canopy such that the angle between the edge of canopy or overhang to sill is less than 45 degrees.
7. When used in the "HVHZ", steel must be protected as specified in FBC Section 2222.6.
8. See drawing FL-41130.4 for size and design pressure limitations.

**Supporting Documents:**

- |  |  |  |   |  |  |  |   |  |  |   |
|--|--|--|---|--|--|--|---|--|--|---|
| <ol style="list-style-type: none"> <li>1. <b>Test Report No.</b><br/>TEL 01820266<br/>ITS 3053378<br/>TEL 01820457<br/>TEL 01821092</li> <li>2. <b>Drawing No.</b><br/>No. FL-41130.4</li> <li>3. <b>Calculations</b><br/>Anchoring</li> <li>4. <b>Quality Assurance</b><br/>Certificate of Participation issued by National Accreditation and Management Institute, certifying that DKS Steel Door &amp; Frame Systems, Inc. is manufacturing products within a quality assurance program that complies with ISO/IEC 17020 and Guide 53.</li> </ol> | <table border="0"> <tr> <td style="vertical-align: top;"> <p><b>Test Standard</b></p> <p>TAS 201, 202 &amp; 203-94<br/>UL 10C - 09<br/>TAS 201, 202 &amp; 203-94<br/>TAS 201, 202 &amp; 203-94</p> </td> <td style="vertical-align: top; padding-left: 20px;"> <p><b>Testing Laboratory</b></p> <p>Testing Evaluation Lab., Inc.<br/>Intertek Testing Services<br/>Testing Evaluation Lab., Inc.<br/>Testing Evaluation Lab., Inc.</p> </td> <td style="vertical-align: top; padding-left: 20px;"> <p><b>Signed by</b></p> <p>Lyndon F. Schmidt, P.E.<br/>Mike van Geyn<br/>William Shelton, P.E.<br/>William Shelton, P.E.</p> </td> </tr> <tr> <td style="vertical-align: top;"> <p><b>Prepared by</b></p> <p>RW Building Consultants, Inc. (#9813)</p> </td> <td style="vertical-align: top; padding-left: 20px;"> <p><b>Prepared by</b></p> <p>RW Building Consultants, Inc. (#9813)</p> </td> <td style="vertical-align: top; padding-left: 20px;"> <p><b>Signed &amp; Sealed by</b></p> <p>Lyndon F. Schmidt, P.E.</p> </td> </tr> <tr> <td></td> <td></td> <td style="vertical-align: top; padding-left: 20px;"> <p><b>Signed &amp; Sealed by</b></p> <p>Lyndon F. Schmidt, P.E.</p> </td> </tr> </table> | <p><b>Test Standard</b></p> <p>TAS 201, 202 &amp; 203-94<br/>UL 10C - 09<br/>TAS 201, 202 &amp; 203-94<br/>TAS 201, 202 &amp; 203-94</p> | <p><b>Testing Laboratory</b></p> <p>Testing Evaluation Lab., Inc.<br/>Intertek Testing Services<br/>Testing Evaluation Lab., Inc.<br/>Testing Evaluation Lab., Inc.</p> | <p><b>Signed by</b></p> <p>Lyndon F. Schmidt, P.E.<br/>Mike van Geyn<br/>William Shelton, P.E.<br/>William Shelton, P.E.</p> | <p><b>Prepared by</b></p> <p>RW Building Consultants, Inc. (#9813)</p> | <p><b>Prepared by</b></p> <p>RW Building Consultants, Inc. (#9813)</p> | <p><b>Signed &amp; Sealed by</b></p> <p>Lyndon F. Schmidt, P.E.</p> |  |  | <p><b>Signed &amp; Sealed by</b></p> <p>Lyndon F. Schmidt, P.E.</p> |
| <p><b>Test Standard</b></p> <p>TAS 201, 202 &amp; 203-94<br/>UL 10C - 09<br/>TAS 201, 202 &amp; 203-94<br/>TAS 201, 202 &amp; 203-94</p>   | <p><b>Testing Laboratory</b></p> <p>Testing Evaluation Lab., Inc.<br/>Intertek Testing Services<br/>Testing Evaluation Lab., Inc.<br/>Testing Evaluation Lab., Inc.</p>  | <p><b>Signed by</b></p> <p>Lyndon F. Schmidt, P.E.<br/>Mike van Geyn<br/>William Shelton, P.E.<br/>William Shelton, P.E.</p>             |   |  |  |  |   |  |  |   |
| <p><b>Prepared by</b></p> <p>RW Building Consultants, Inc. (#9813)</p>   | <p><b>Prepared by</b></p> <p>RW Building Consultants, Inc. (#9813)</p>   | <p><b>Signed &amp; Sealed by</b></p> <p>Lyndon F. Schmidt, P.E.</p>  |   |  |  |  |   |  |  |   |
|  |  | <p><b>Signed &amp; Sealed by</b></p> <p>Lyndon F. Schmidt, P.E.</p>  |   |  |  |  |   |  |  |   |

Digitally signed by Lyndon F Schmidt  
Date: 2023.07.19 09:16:58 -04'00'

LYNDON F. SCHMIDT, State of Florida, Professional Engineer, License No. 43409  
This item has been digitally signed and sealed by L. F. Schmidt on 7-19-23.  
Printed copies of this document are not considered signed and sealed and the signature must be verified on any electronic copies.  
**THIS PRODUCT APPROVAL IS VALID ONLY FOR THE STATE OF FLORIDA**



STEEL DOOR & FRAME SYSTEMS, INC.

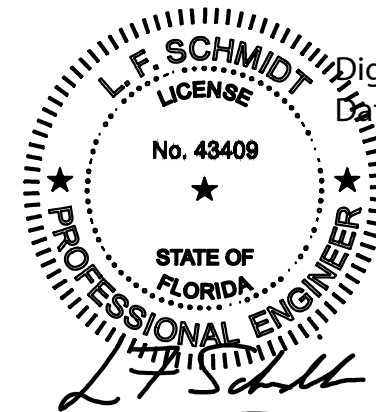
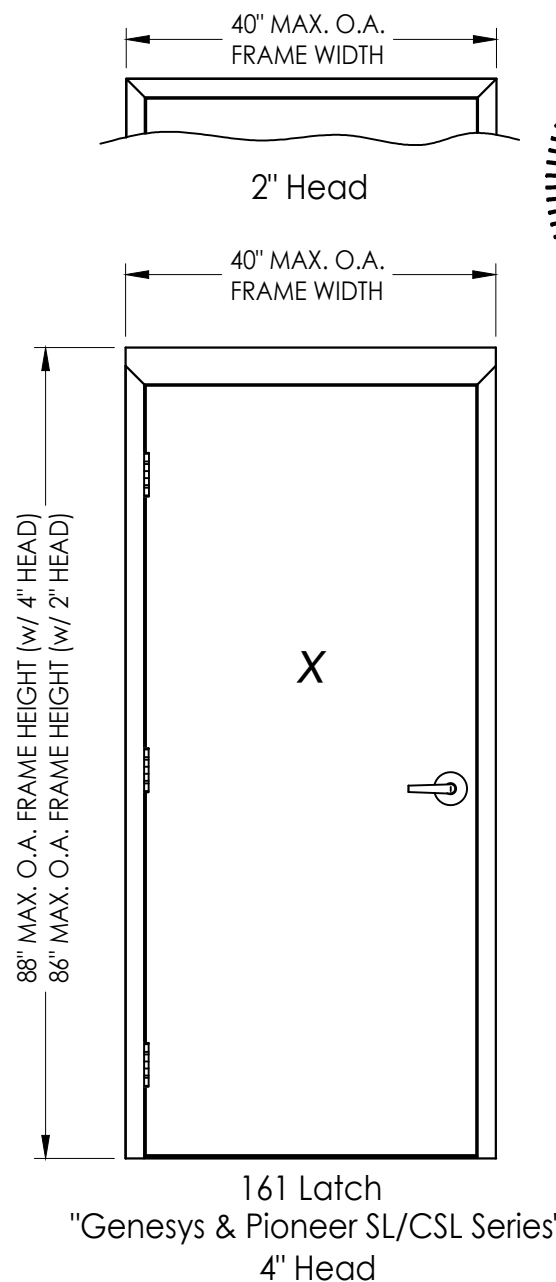
# DKS SERIES 1800 STEEL COMMERCIAL SINGLE DOOR IN SWING / OUT SWING "IMPACT"

## GENERAL NOTES

- This product has been evaluated and is in compliance with the 8th Edition (2023) Florida Building Code (FBC) structural requirements including the "High Velocity Hurricane Zone" (HVHZ).
- Product anchors shall be as listed and spaced as shown on details. Anchor embedment to base material shall be beyond wall dressing or stucco.
- When used in the "HVHZ" this product complies with Section 1626 of the Florida Building Code and does not require an impact resistant covering.
- When used in areas outside of the "HVHZ" requiring wind borne debris protection, this product complies with FBC Sections 1609.1.2 & R301.2.1.2 and does not require an impact resistant covering. This product meets missile level "D" and includes Wind Zone 4 as defined in ASTM E 1996 and FBC Sections 1609.1.2.2 & R301.2.1.2.1.
- Site conditions that deviate from the details of this drawing require further engineering analysis by a licensed engineer or registered architect.
- This product does not meet the water infiltration requirements for the "HVHZ" and shall be installed only in non-habitable areas or at habitable locations protected by an overhang or canopy such that the angle between the edge of canopy or overhang to sill is less than 45 degrees.
- When used in the "HVHZ", steel must be protected as specified in FBC Section 2222.6

TABLE OF CONTENTS

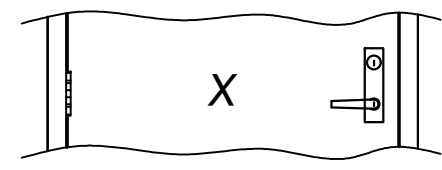
SHEET#	DESCRIPTION
1	Typical elevation, design pressures & general notes
2	Door panel details
3	Horizontal cross sections
4	Vertical cross sections
5	Frame anchoring
6	Frame anchoring details
7	Components
8	Bill of materials and components



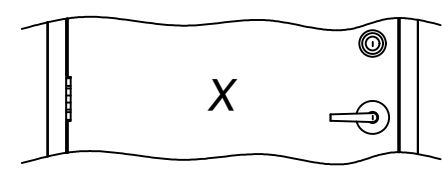
Digitally signed by Lyndon F Schmidt  
Date: 2023.07.19 09:06:30 -04'00'

This item has been digitally signed and sealed by L. F. Schmidt, P.E. on the date adjacent to the seal. Printed copies of this document are not considered signed and sealed and the signature must be verified on any electronic copies.

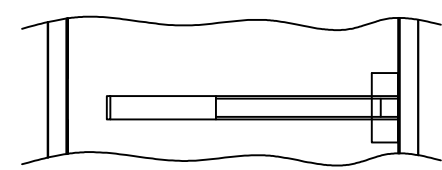
THIS PRODUCT APPROVAL IS VALID ONLY FOR THE STATE OF FLORIDA



86E Mortise Lock  
"M Series"



161 Latch & Deadbolt  
"Pioneer SL/CSL Series" Latch  
"T300 Series" Deadbolt



"F5000/5000 & F7700/7700 Series"  
Panic Bar Exit Device

MAX FRAME DIMENSION	LOCK TYPE	DESIGN PRESSURE (PSF) INSWING		DESIGN PRESSURE (PSF) OUTSWING	
		POSITIVE	NEGATIVE	POSITIVE	NEGATIVE
		40.0" x 88.0"	161 LATCH "Pioneer SL/CSL Series"	+55.0	-55.0
40.0" x 88.0"	161 LATCH & DEADBOLT "Pioneer SL/CSL & T300 Series"	+55.0	-55.0	+55.0	-55.0
40.0" x 88.0"	161 LATCH "Genesys Series"	+70.0	-70.0	+70.0	-70.0
40.0" x 88.0"	PANIC BAR EXIT DEVICE "F5000/5000 Series"	N/A	N/A	+50.0	-50.0
40.0" x 88.0"	PANIC BAR EXIT DEVICE "F7700/7700 Series"	N/A	N/A	+70.0	-70.0
40.0" x 88.0"	86E Mortise Lock "M Series"	+80.0	-80.0	+80.0	-80.0

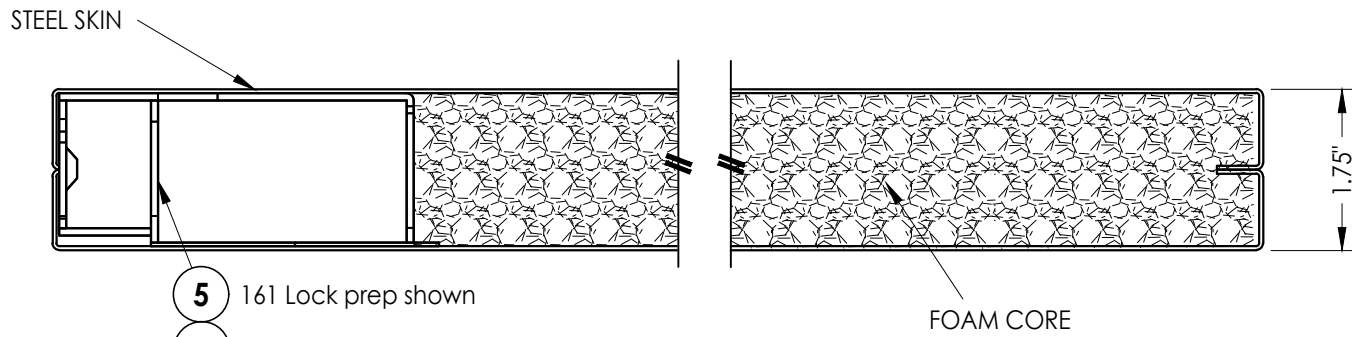
Documents Prepared By:  
Lyndon F. Schmidt  
P.E. No. 43409

PRODUCT: CAL-ROYAL STEEL COMMERCIAL DOOR  
PART OR ASSEMBLY: TYPICAL ELEVATION, DESIGN PRESSURES & GENERAL NOTES

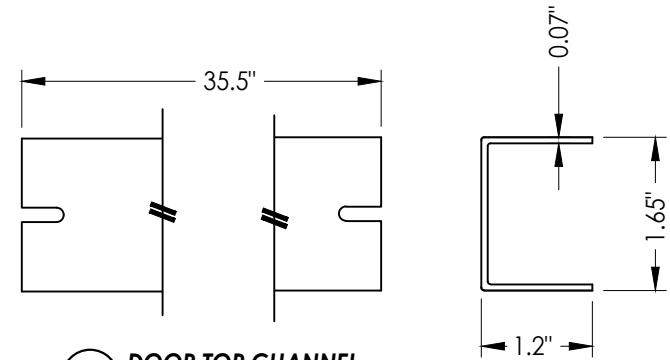
NO.	DATE	BY	REVISIONS
1	7/01/23	LFS	UPDATE TO 8TH ED. (2023) FBC

DATE: 3/21/22  
SCALE: N.T.S.  
DWG. BY: LFS  
CHK. BY: RW  
DRAWING NO.: FL-41130.4  
SHEET 1 OF 8

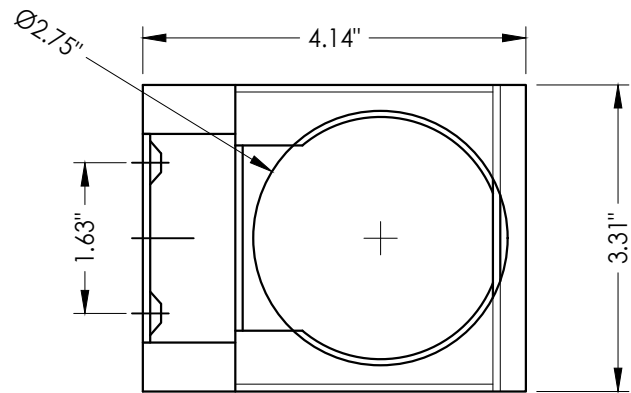
RW BUILDING CONSULTANTS, INC.  
P.O. Box 230, Vairico, FL 33595  
Phone No.: 813.659.9197  
FBPE Registry No. 9813



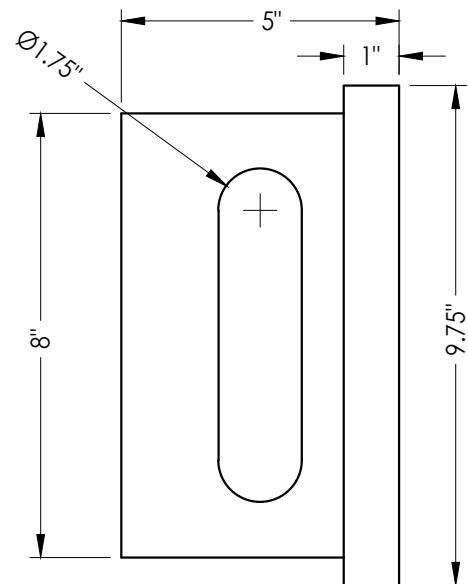
**1**  
**2** **HORIZONTAL CROSS SECTION**



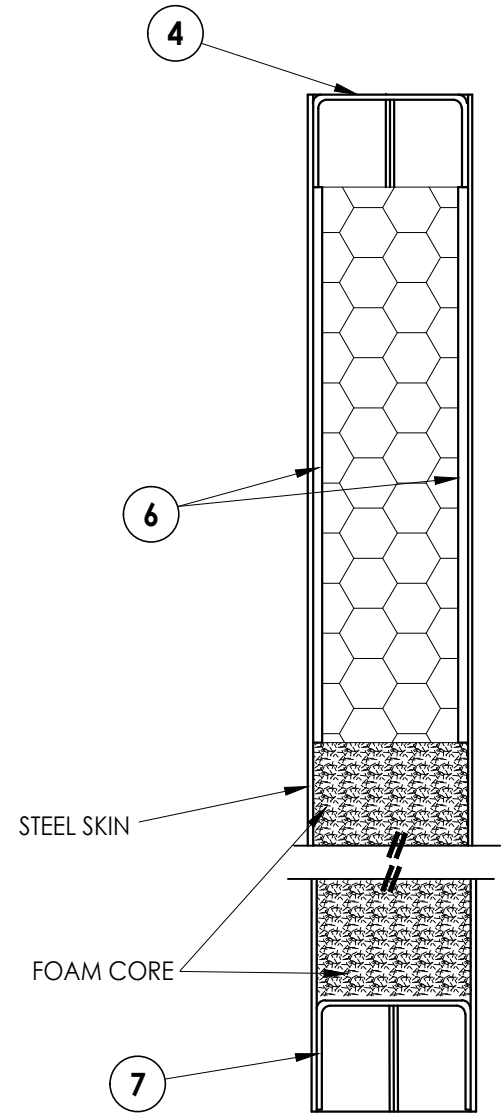
**4** **DOOR TOP CHANNEL**



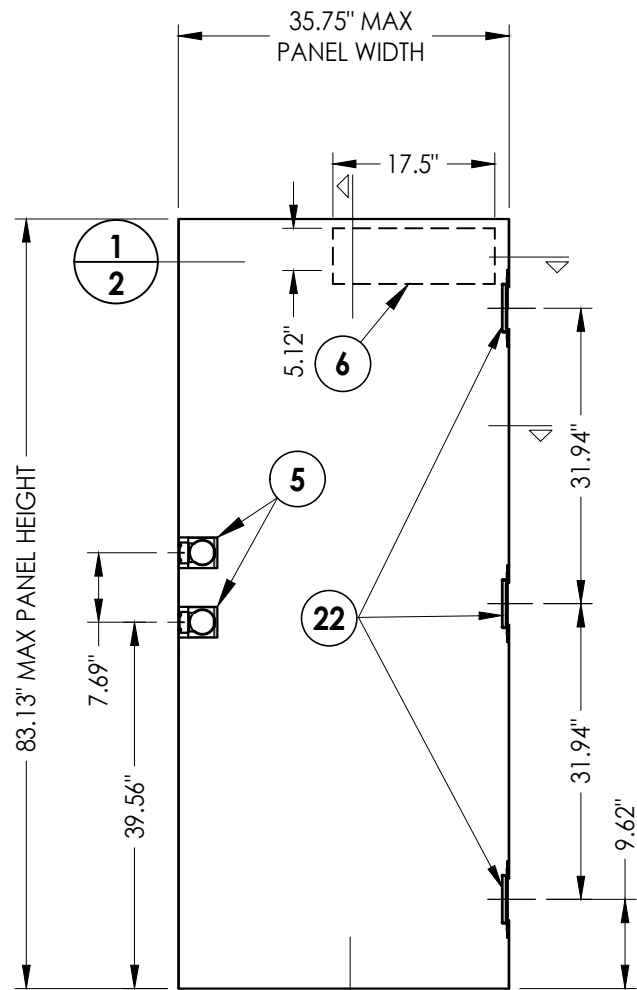
**5** **STEEL LOCK BOX REINFORCEMENT**  
161 Lock prep only



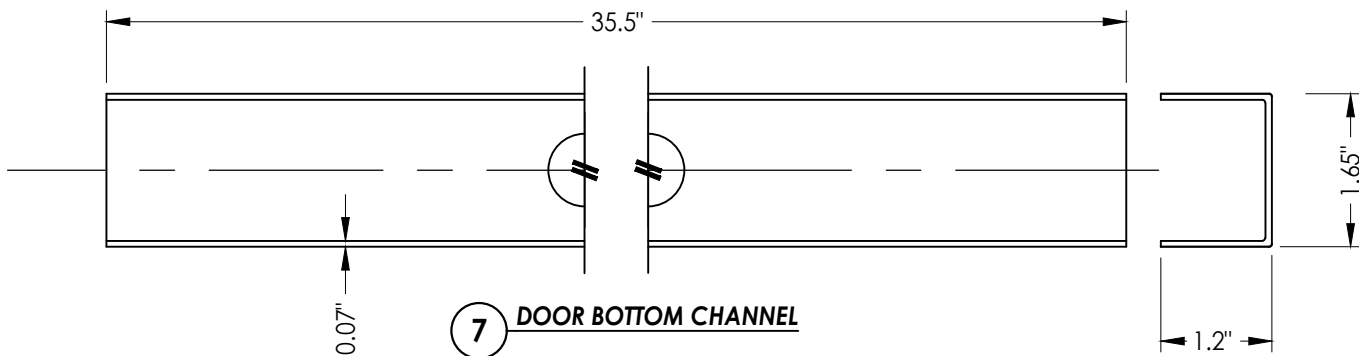
**3** **STEEL LOCK BOX REINFORCEMENT**  
Mortise Lock prep only



**2**  
**2** **VERTICAL CROSS SECTION**



**1** **DKS STEEL DOOR PANEL**



**7** **DOOR BOTTOM CHANNEL**

STEEL DOOR SKIN (18 GA.): MIN. 0.045" THK.  
STEEL GRADE: ASTM A1008 GALV. STEEL (F<sub>y</sub> = 33,000 PSI MIN.)  
CORE MATERIAL: EPS FOAM (POLYSTYRENE - 1.0 PCF MIN. DENSITY)

Documents Prepared By:  
Lyndon F. Schmidt  
P.E. No. 43409

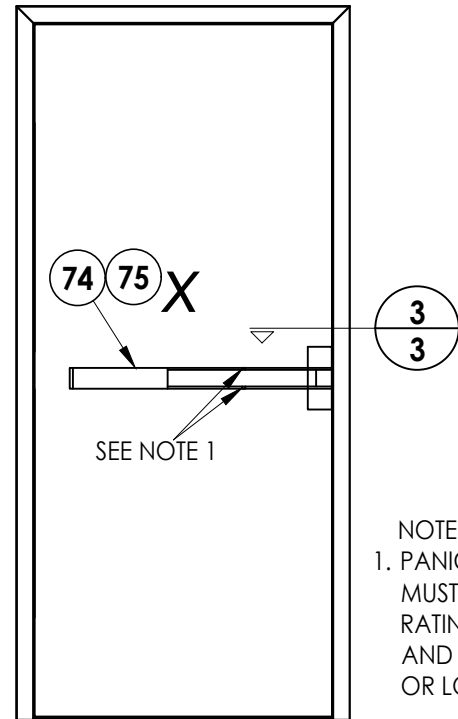
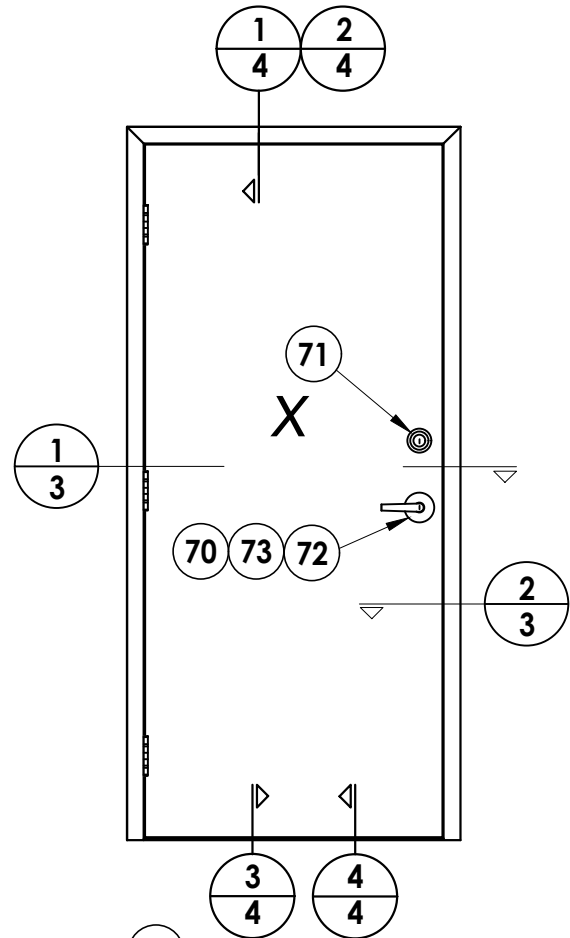
**RW** BUILDING CONSULTANTS, INC.  
P.O. Box 230, Vairico, FL 33595  
Phone No.: 813.659.9197  
FBPE Registry No. 9813

PRODUCT: DKS  
STEEL COMMERCIAL DOOR

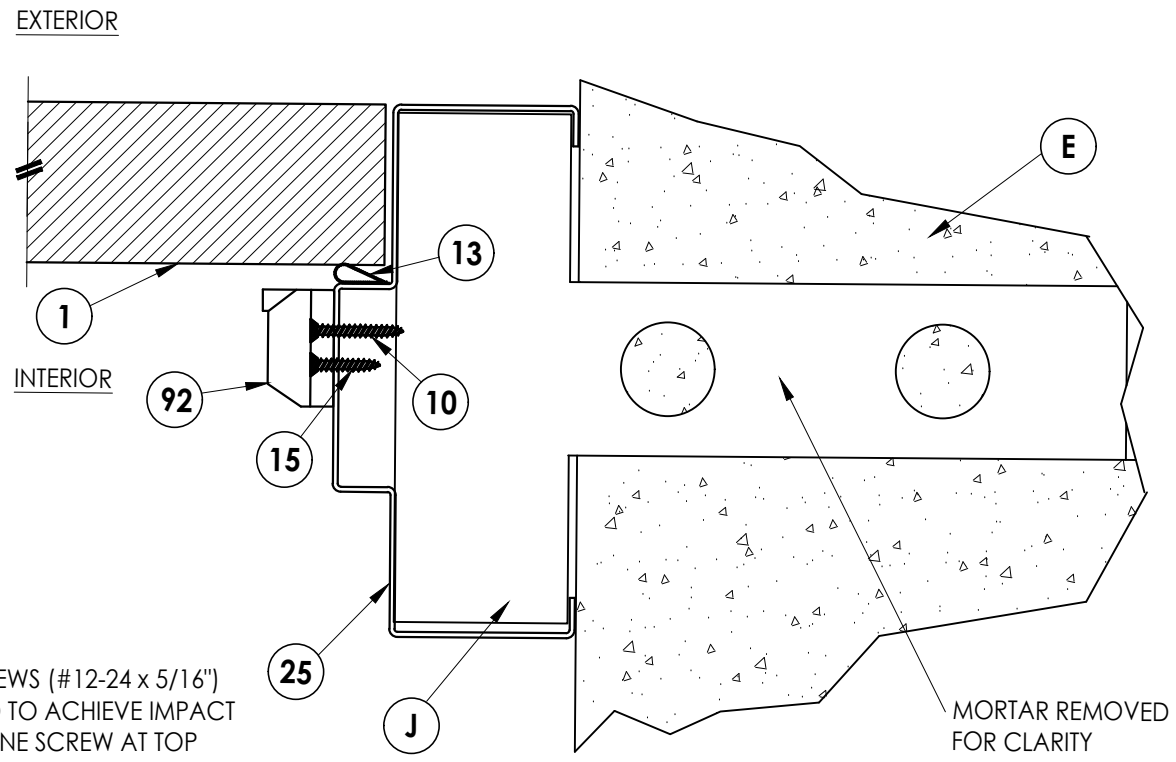
PART OR ASSEMBLY:  
DOOR PANEL DETAILS

NO.	DATE	BY	REVISIONS
1	7/01/23	LFS	UPDATE TO 8TH ED. (2023) FBC

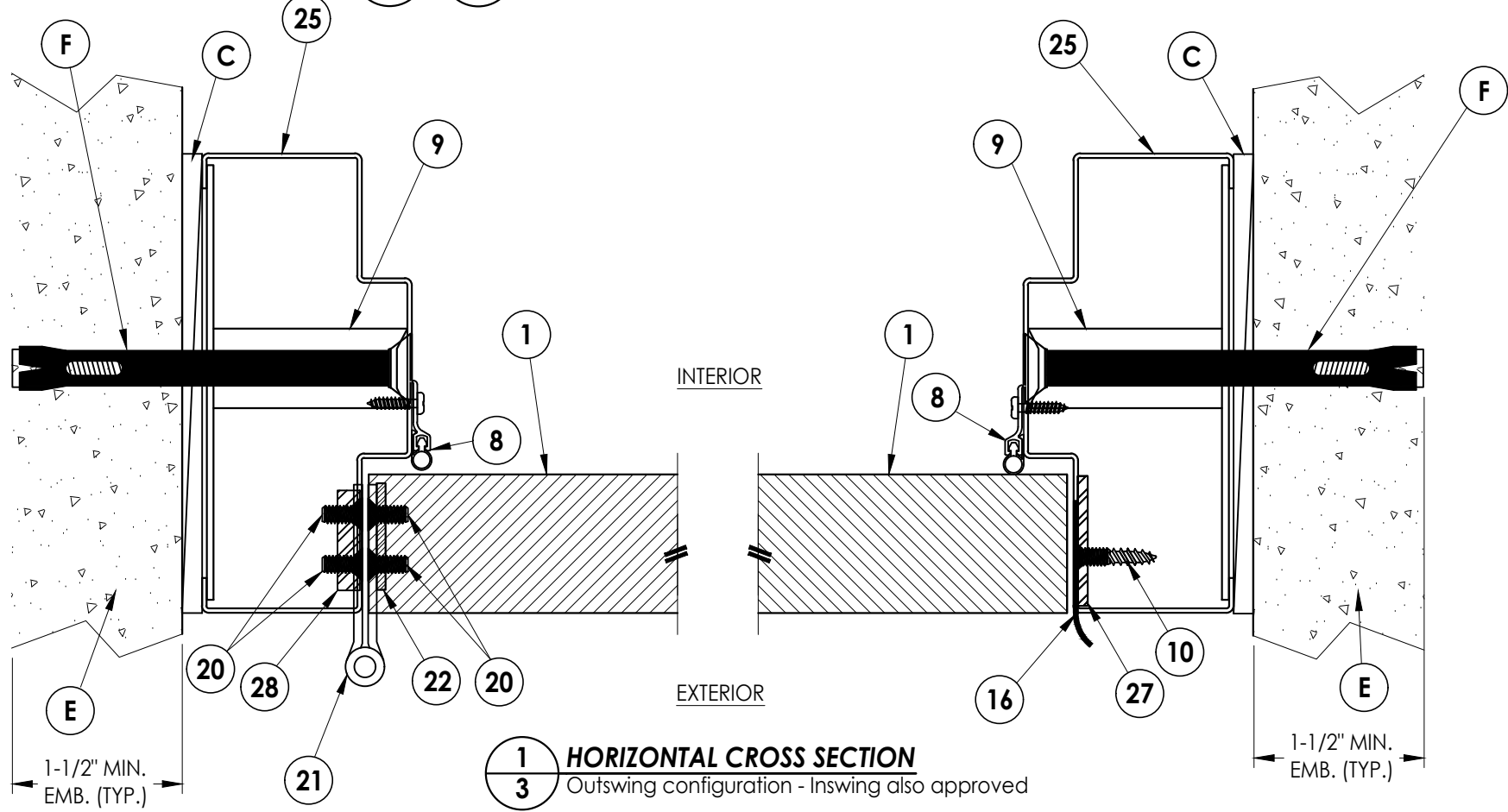
DATE: 3/21/22  
SCALE: N.T.S.  
DWG. BY: LFS  
CHK. BY: RW  
DRAWING NO.: FL-41130.4  
SHEET 2 OF 8



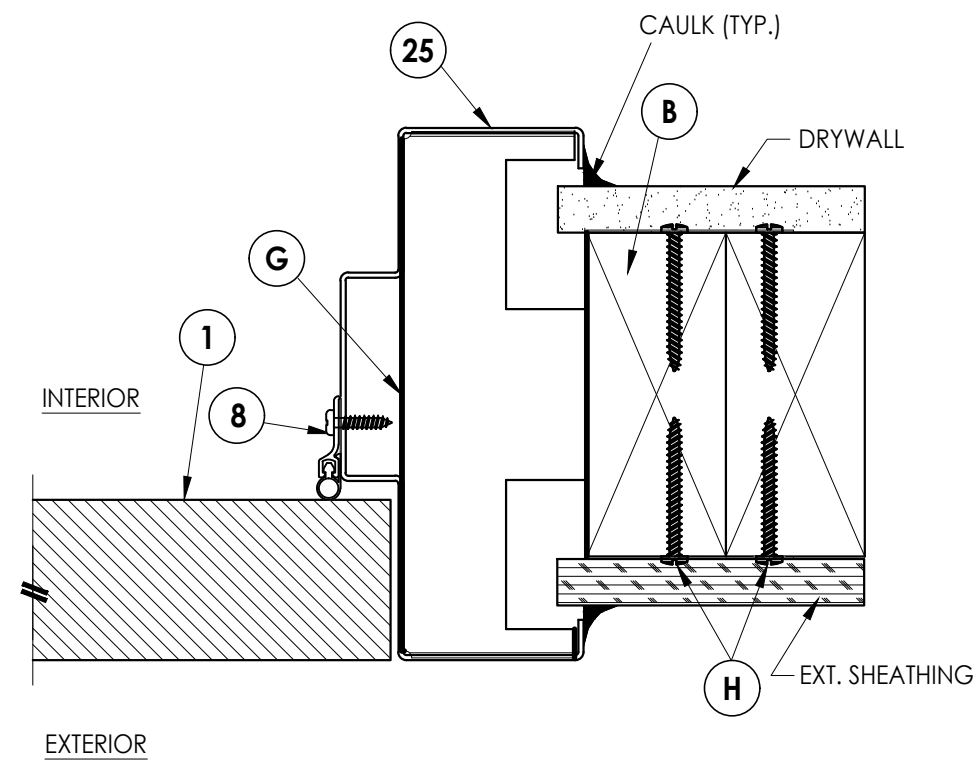
NOTE:  
 1. PANIC BAR SET SCREWS (#12-24 x 5/16")  
 MUST BE ACTIVATED TO ACHIEVE IMPACT  
 RATING. LOCATE ONE SCREW AT TOP  
 AND BOTTOM AT CENTER OF PUSH RAIL  
 OR LOCATE ONE SCREW AT EACH END OF BAR.



**3** **HORIZONTAL CROSS SECTION**  
 3 Masonry Construction  
 Masonry "Tee" Anchor



**1** **HORIZONTAL CROSS SECTION**  
 3 Outswing configuration - Inswing also approved



**2** **HORIZONTAL CROSS SECTION**  
 3 2X Stud Construction  
 Wood Stud Anchor

Documents Prepared By:  
 Lyndon F. Schmidt  
 P.E. No. 43409

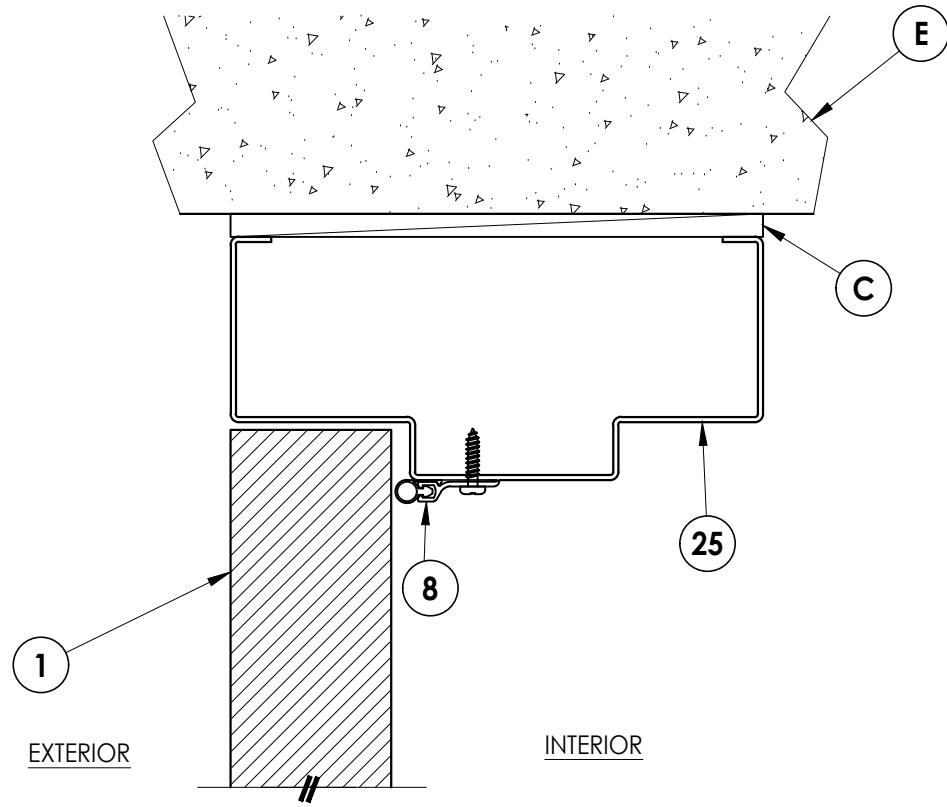
**RW** BUILDING CONSULTANTS, INC.  
 P.O. Box 230, Valrico, FL 33595  
 Phone No.: 813.659.9197  
 FBPE Registry No. 9813

PRODUCT:  
 DKS  
 STEEL COMMERCIAL DOOR

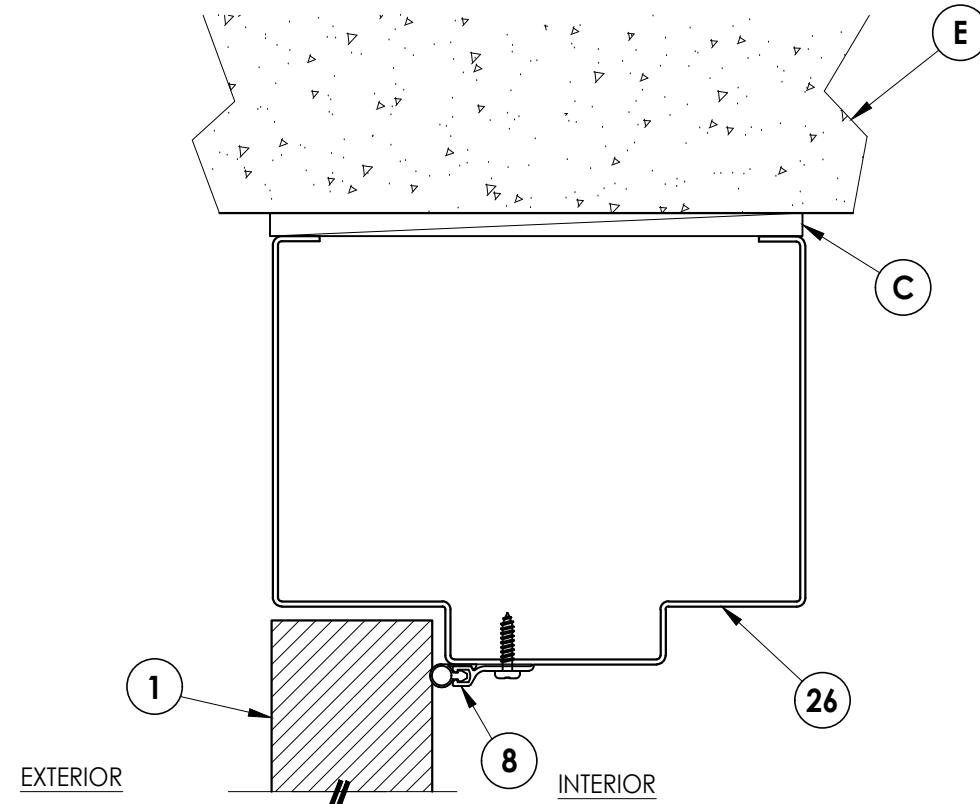
PART OR ASSEMBLY:  
 HORIZONTAL CROSS SECTIONS

NO.	DATE	BY
1	7/01/23	LFS
UPDATE TO 8TH ED. (2023) FBC		

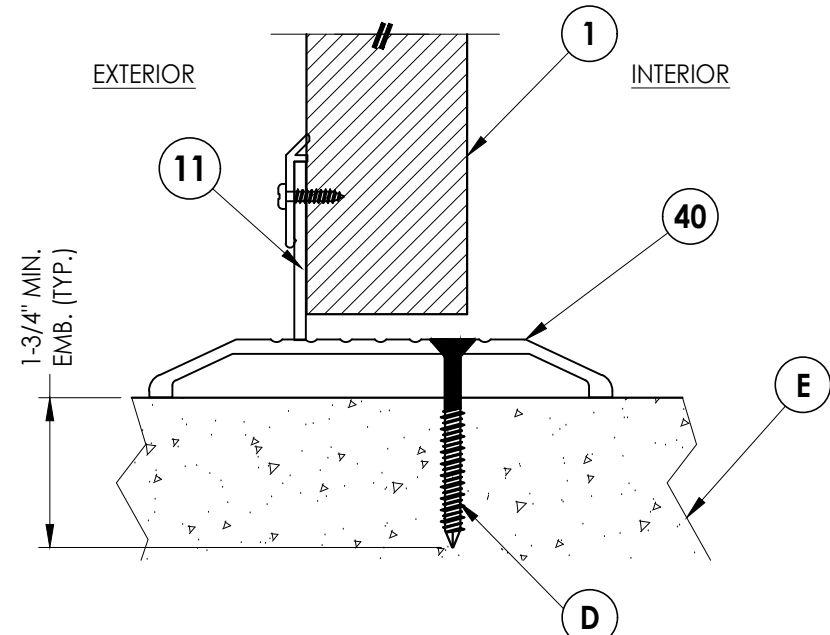
DATE: 3/21/22  
 SCALE: N.T.S.  
 DWG. BY: LFS  
 CHK. BY: RW  
 DRAWING NO.: FL-41130.4  
 SHEET 3 OF 8



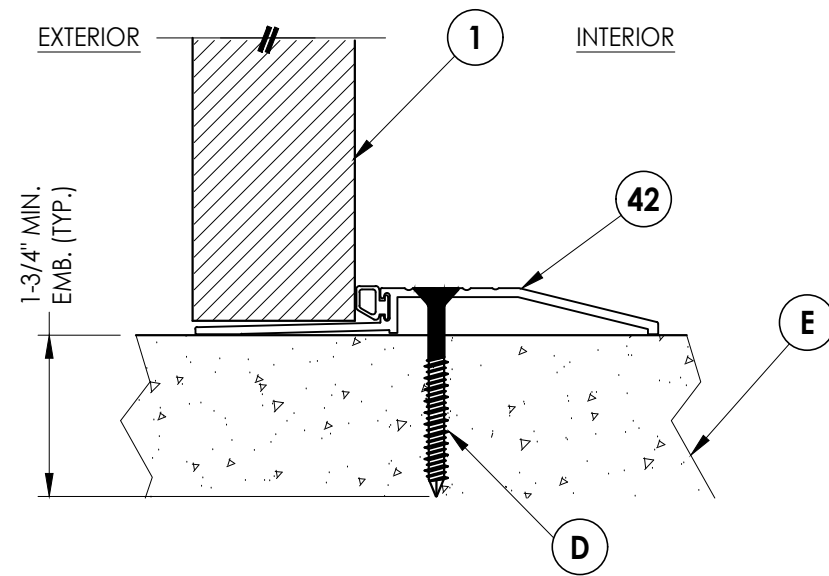
**1** VERTICAL CROSS SECTION  
**4** Outswing configuration - Inswing also approved



**2** VERTICAL CROSS SECTION  
**4** Outswing configuration - Inswing also approved



**3** VERTICAL CROSS SECTION  
**4** Inswing configuration



**4** VERTICAL CROSS SECTION  
**4** Outswing configuration

Documents Prepared By:  
 Lyndon F. Schmidt  
 P.E. No. 43409

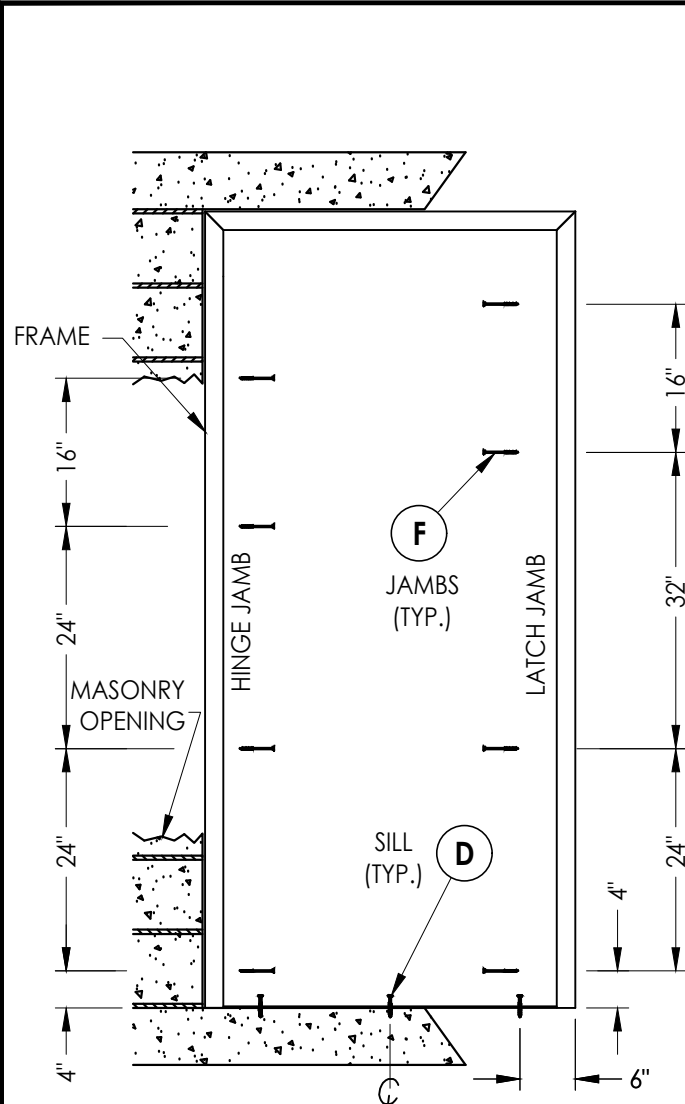
**RW** BUILDING CONSULTANTS, INC.  
 P.O. Box 230, Vairico, FL 33595  
 Phone No.: 813.659.9197  
 FBPE Registry No. 9813

PRODUCT:  
 DKS  
 STEEL COMMERCIAL DOOR

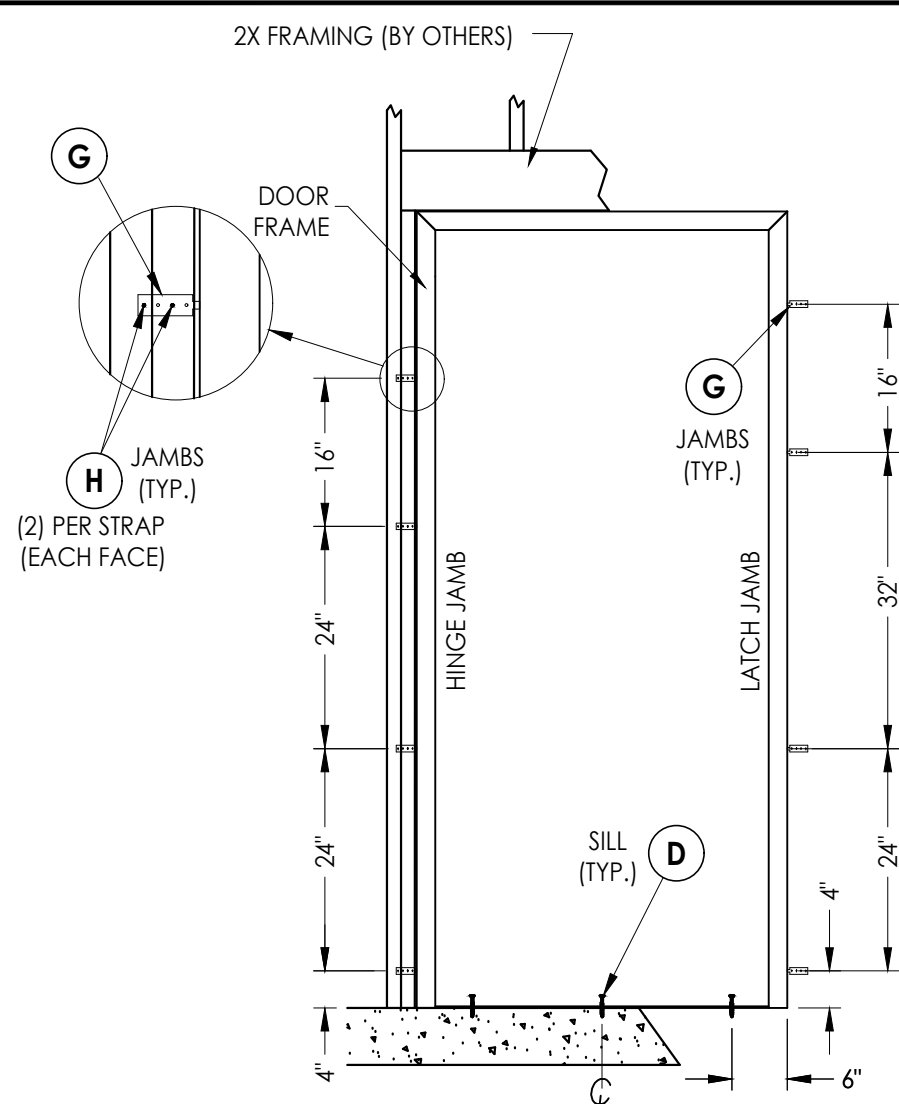
PART OR ASSEMBLY:  
 VERTICAL CROSS SECTIONS

NO.	DATE	BY
1	7/01/23	LFS
	UPDATE TO 8TH ED. (2023)	FBC

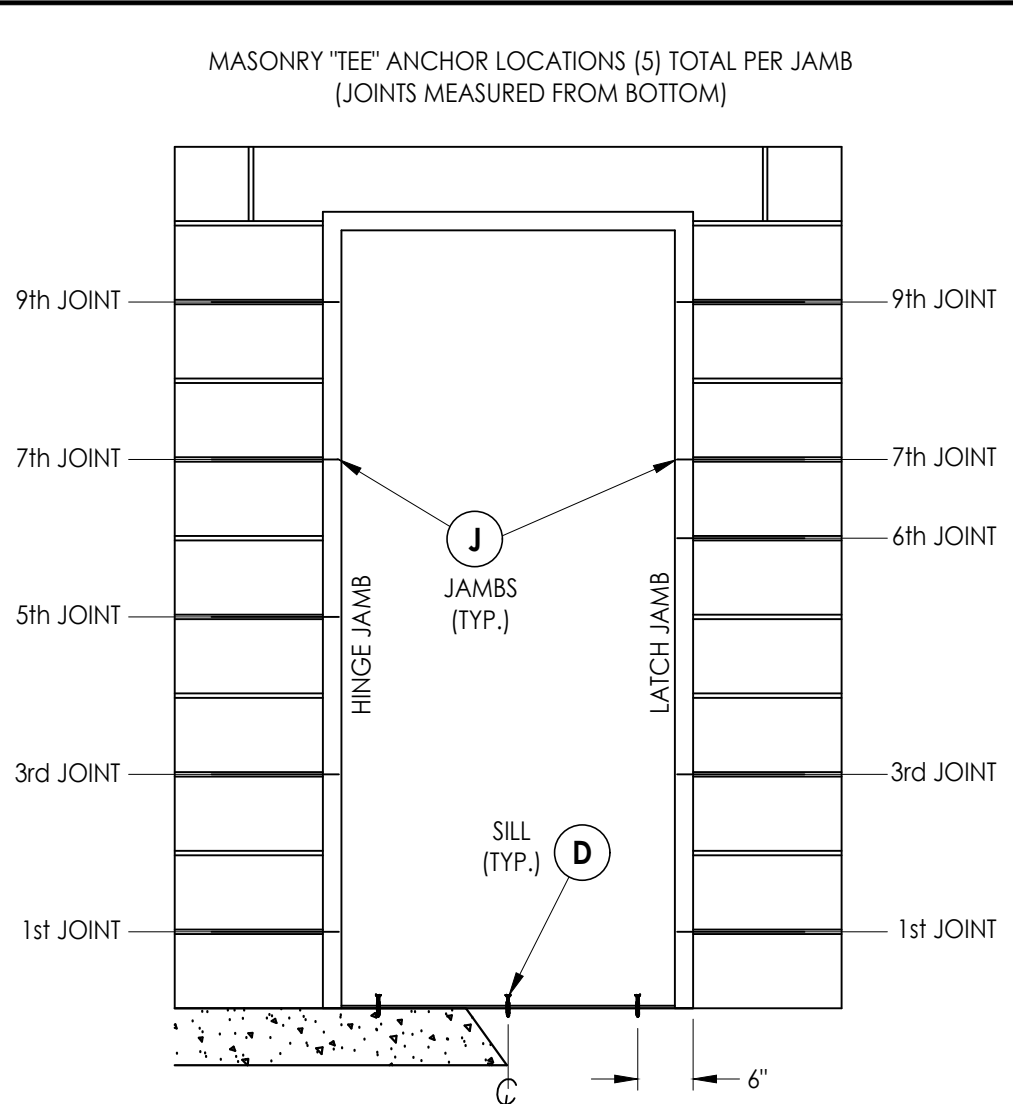
DATE: 3/21/22  
 SCALE: N.T.S.  
 DWG. BY: LFS  
 CHK. BY: RW  
 DRAWING NO.: FL-41130.4  
 SHEET 4 OF 8



**FRAME ANCHORING**  
Masonry Construction  
Concrete Anchors



**FRAME ANCHORING**  
2X Stud Construction  
Strap Anchors



**FRAME ANCHORING**  
Masonry Construction  
Masonry "Tee" Anchors

**CONCRETE ANCHOR NOTES:**

1. Substitution of equal concrete screws from a different supplier may have different edge distance and center distance requirements.
2. Concrete screw locations at the corners may be adjusted to maintain the minimum edge distance to mortar joints. If concrete screw locations noted as "MAX. ON CENTER" must be adjusted to maintain the minimum edge distance to mortar joints, additional concrete screws may be required to ensure the maximum on center dimension is not exceeded.
3. Concrete anchor table:

ANCHOR TYPE	ANCHOR SIZE	MIN. EMBEDMENT	MIN. CLEARANCE TO MASONRY EDGE	MIN. CLEARANCE TO ADJACENT ANCHOR
ITW TAPCON®	1/4"	1-3/4"	2-1/2"	4"
DeWALT ULTRACON®	1/4"	1-3/4"	1"	4"
DYNABOLT SLEEVE ANCHOR	3/8"	1-1/2"	2-1/4"	4-1/2"

4. Embedment may be through 1-1/4" face shell of hollow block.

**WOOD SCREW INSTALLATION NOTES:**

1. Maintain a minimum 5/8" edge distance, 1" end distance, & 1" o.c. spacing of wood screws to prevent the splitting of wood.

Documents Prepared By:  
Lyndon F. Schmidt  
P.E. No. 43409

**RW** BUILDING CONSULTANTS, INC.  
P.O. Box 230, Valrico, FL 33595  
Phone No.: 813.659.9197  
FBPE Registry No. 9813

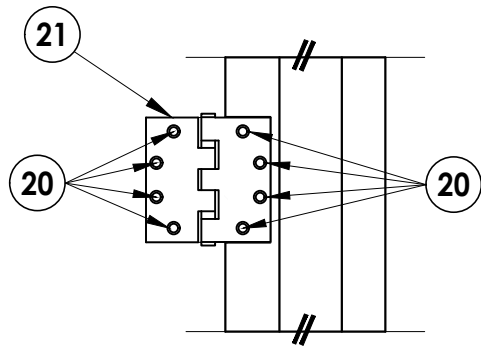
PRODUCT: DKS STEEL COMMERCIAL DOOR

PART OR ASSEMBLY: FRAME ANCHORING

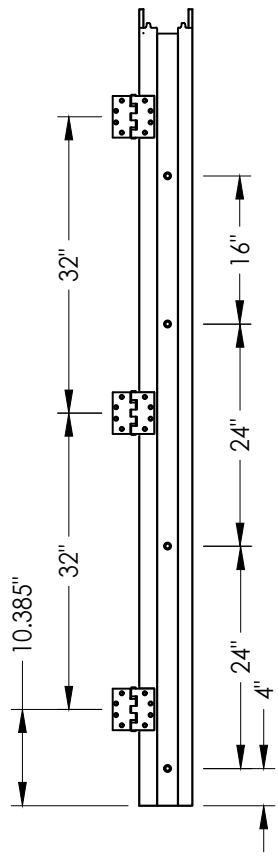
NO.	DATE	BY
1	7/01/23	LFS

REVISIONS

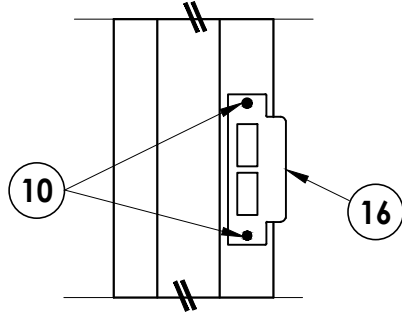
DATE: 3/21/22  
SCALE: N.T.S.  
DWG. BY: LFS  
CHK. BY: RW  
DRAWING NO.: FL-41130.4  
SHEET 5 OF 8



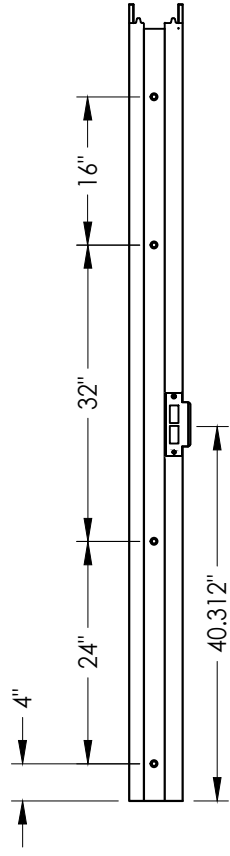
**HINGE DETAIL**



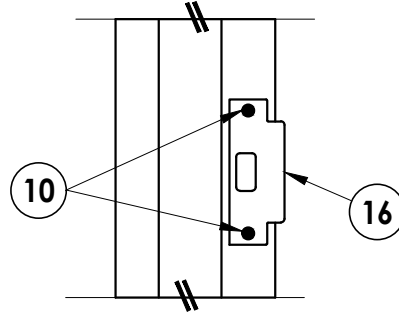
**HINGE JAMB**



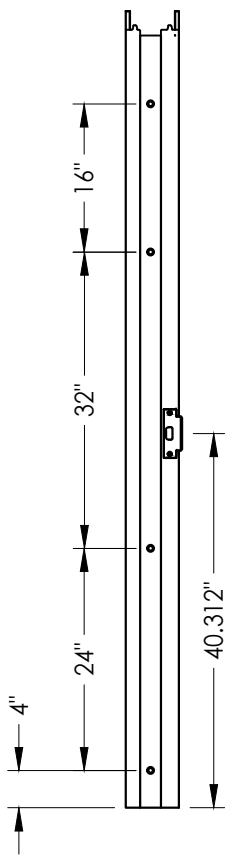
**LATCH DETAIL**  
Mortise Lock



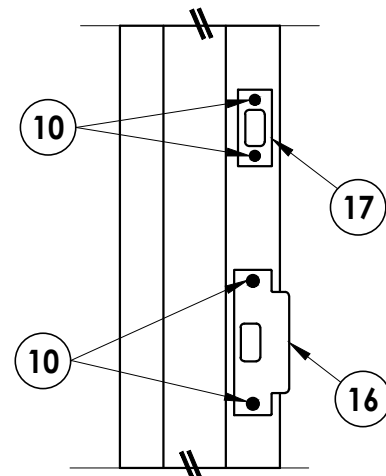
**STRIKE JAMB**  
Mortise Lock



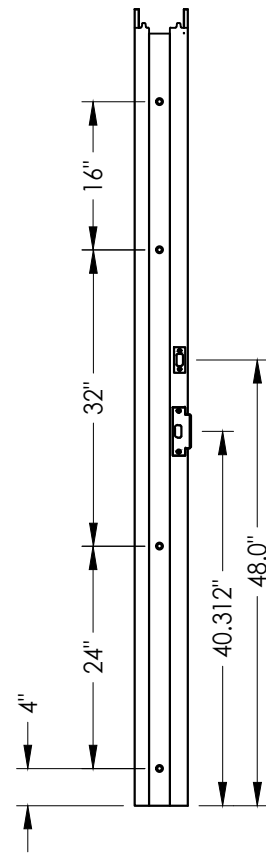
**LATCH DETAIL**  
161 Latch



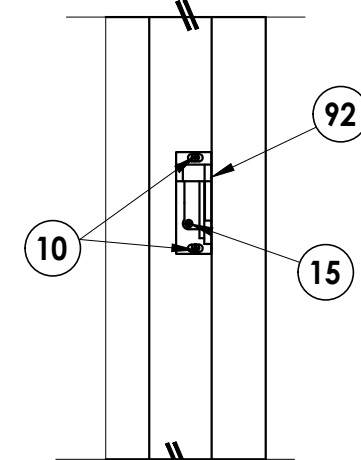
**STRIKE JAMB**  
161 Latch



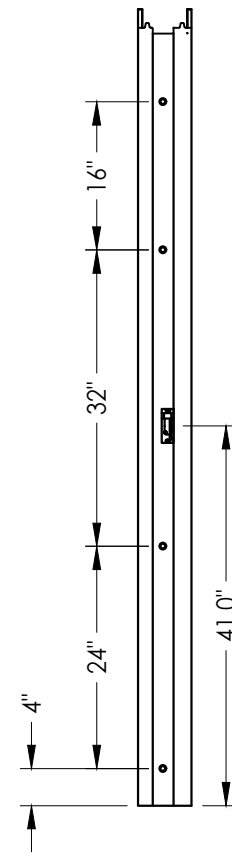
**LATCH & DEADBOLT DETAIL**  
161 Latch & Deadbolt



**STRIKE JAMB**  
161 Latch & Deadbolt



**LATCH DETAIL**  
Panic Bar



**STRIKE JAMB**  
Panic Bar

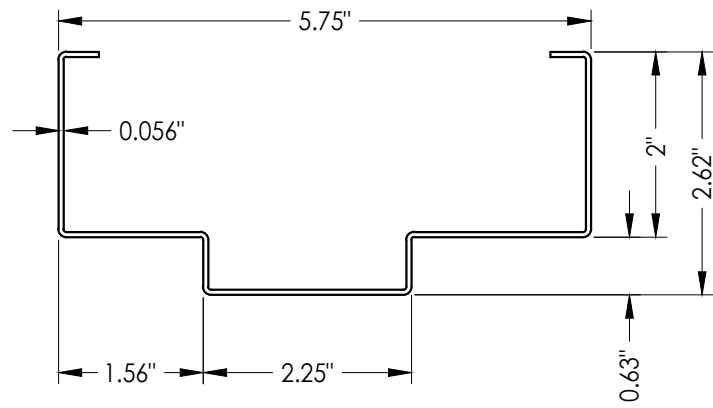
DATE:	3/21/22
SCALE:	N.T.S.
DWG. BY:	LFS
CHK. BY:	RW
DRAWING NO.:	FL-41130.4
SHEET	6 OF 8

NO.	DATE	BY	REVISIONS
1	7/01/23	FBC	UPDATE TO 8TH ED. (2023)

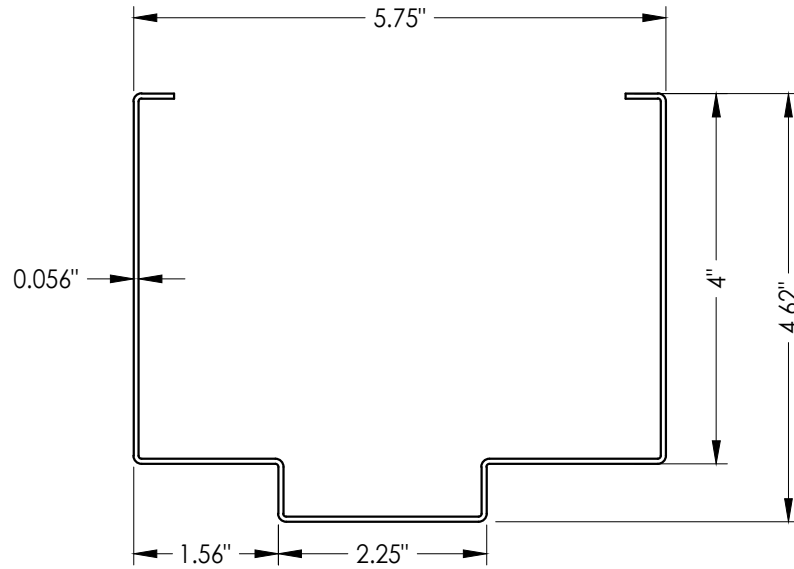
PRODUCT:	DKS STEEL COMMERCIAL DOOR
PART OR ASSEMBLY:	FRAME ANCHORING DETAILS

Documents Prepared By:  
Lyndon F. Schmidt  
P.E. No. 43409

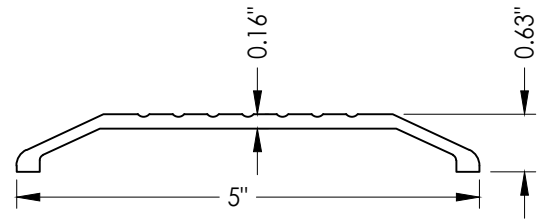
**RW** BUILDING CONSULTANTS, INC.  
P.O. Box 230, Vairico, FL 33595  
Phone No.: 813.659.9197  
FBPE Registry No. 9813



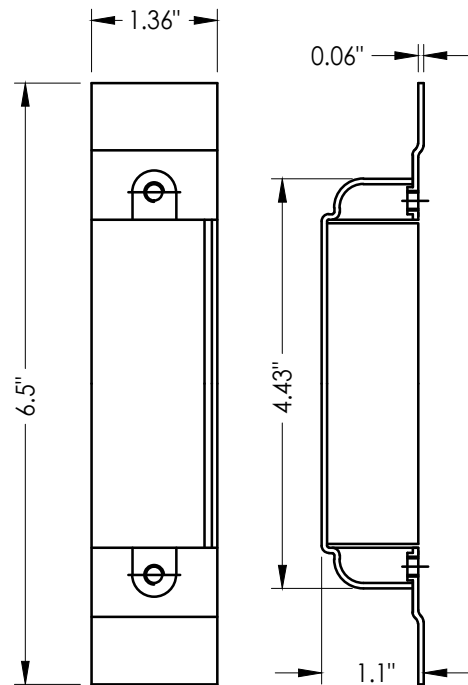
**26 HOLLOW METAL FRAME**  
2" HEAD



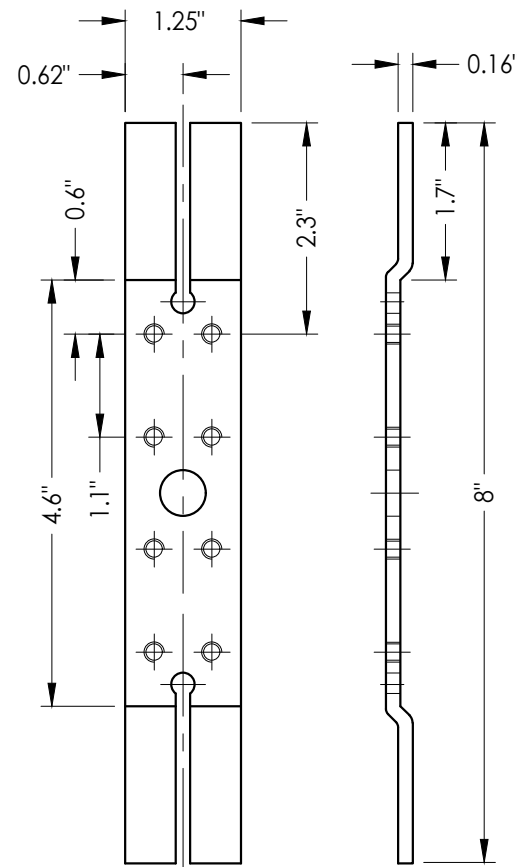
**26 HOLLOW METAL FRAME**  
4" HEAD



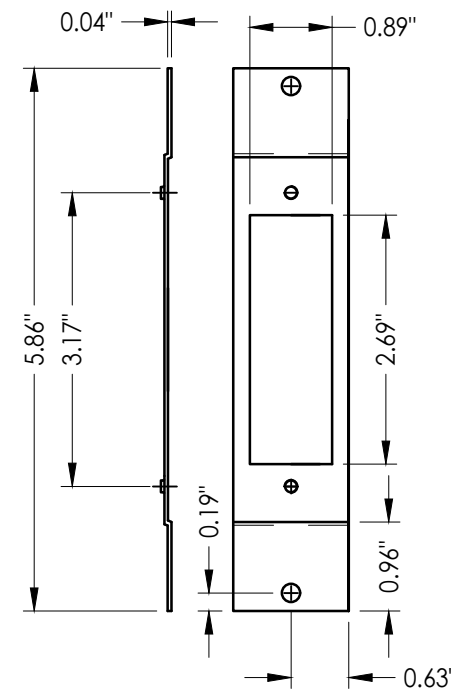
**40 THRESHOLD**  
Pemko 156



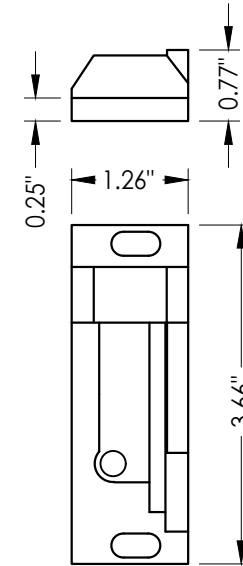
**30 DOOR LATCH REINFORCEMENT**  
Mortise Lock only



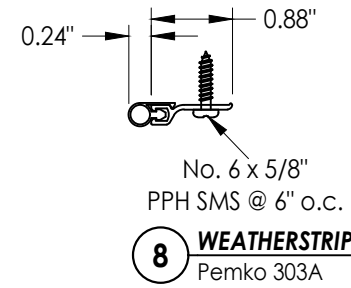
**22 DOOR HINGE REINFORCEMENT**



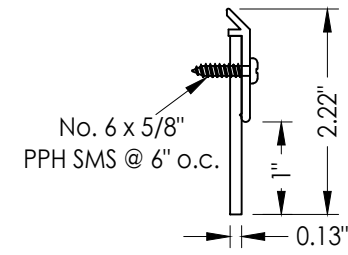
**27 FRAME LATCH STRIKE REINFORCEMENT**



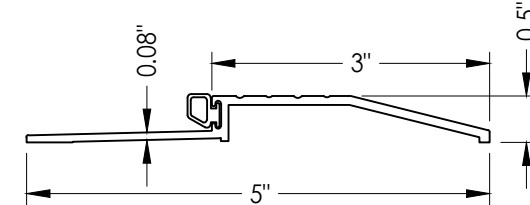
**92 PANIC BAR LATCH STRIKE PLATE**  
@ Jamb



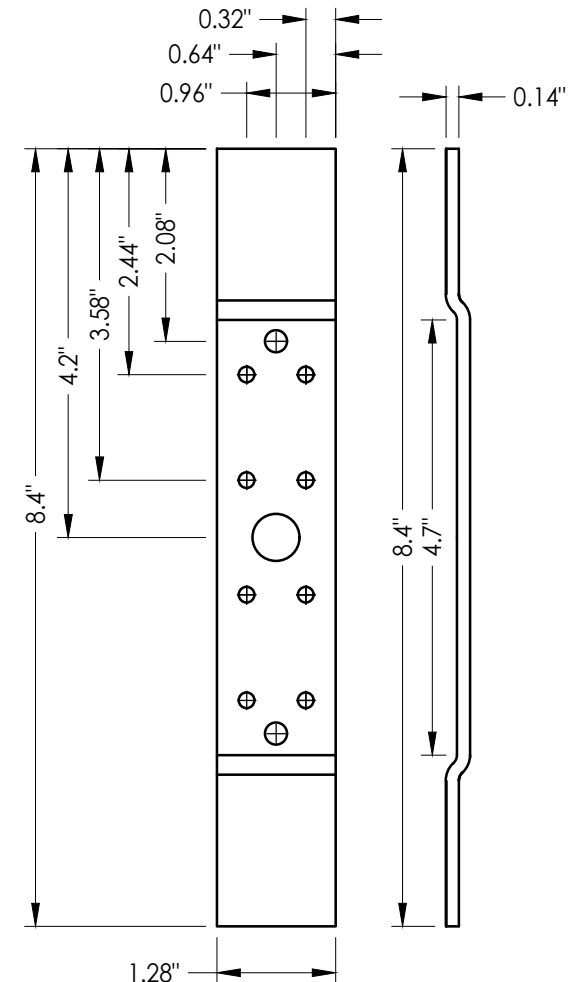
**8 WEATHERSTRIP**  
Pemko 303A



**11 DOOR SWEEP**  
Pemko 3151



**42 THRESHOLD**  
Pemko 2001P



**28 FRAME HINGE REINFORCEMENT**

Documents Prepared By:  
Lyndon F. Schmidt  
P.E. No. 43409

**RW** BUILDING CONSULTANTS, INC.  
P.O. Box 230, Vairico, FL 33595  
Phone No.: 813.659.9197  
FBPE Registry No. 9813

PRODUCT:  
DKS  
STEEL COMMERCIAL DOOR

PART OR ASSEMBLY:  
COMPONENTS

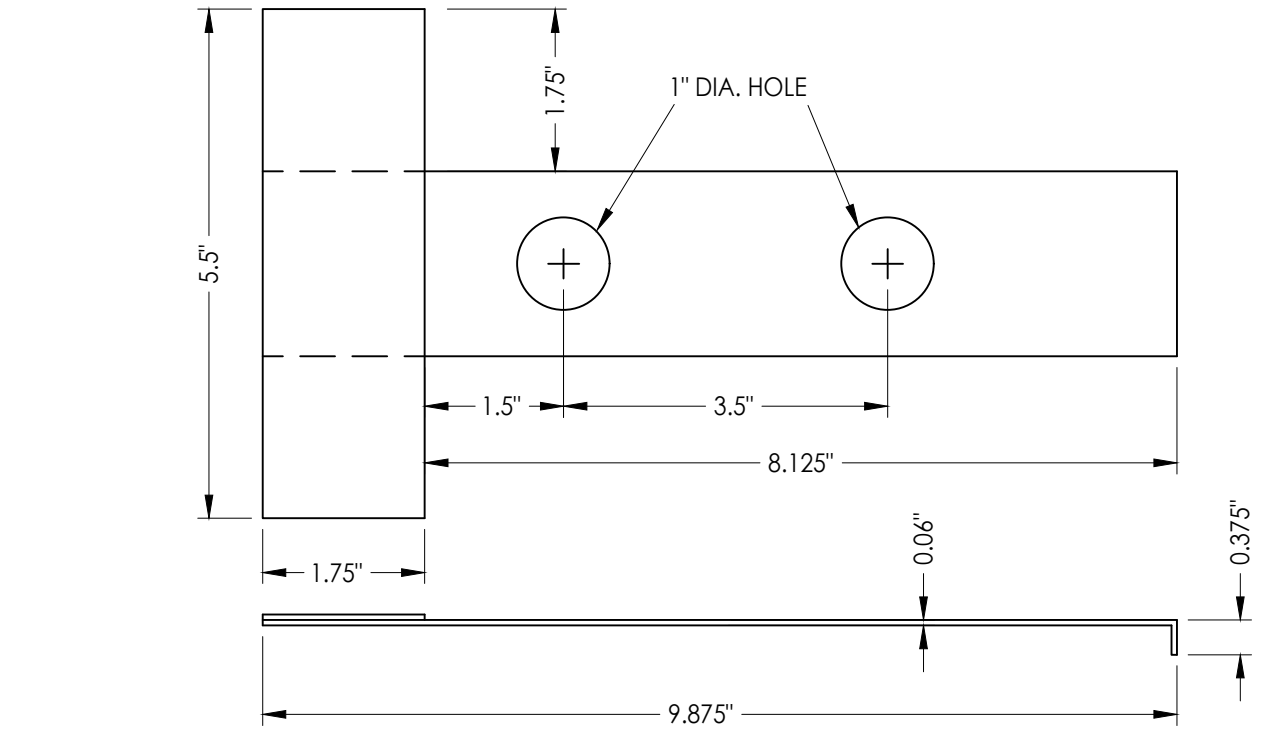
NO.	DATE	BY	LFS
1	7/01/23	DATE	BY
UPDATE TO 8TH ED. (2023) FBC			

DATE:	3/21/22
SCALE:	N.T.S.
DWG. BY:	LFS
CHK. BY:	RW
DRAWING NO.:	FL-41130.4
SHEET	7 OF 8

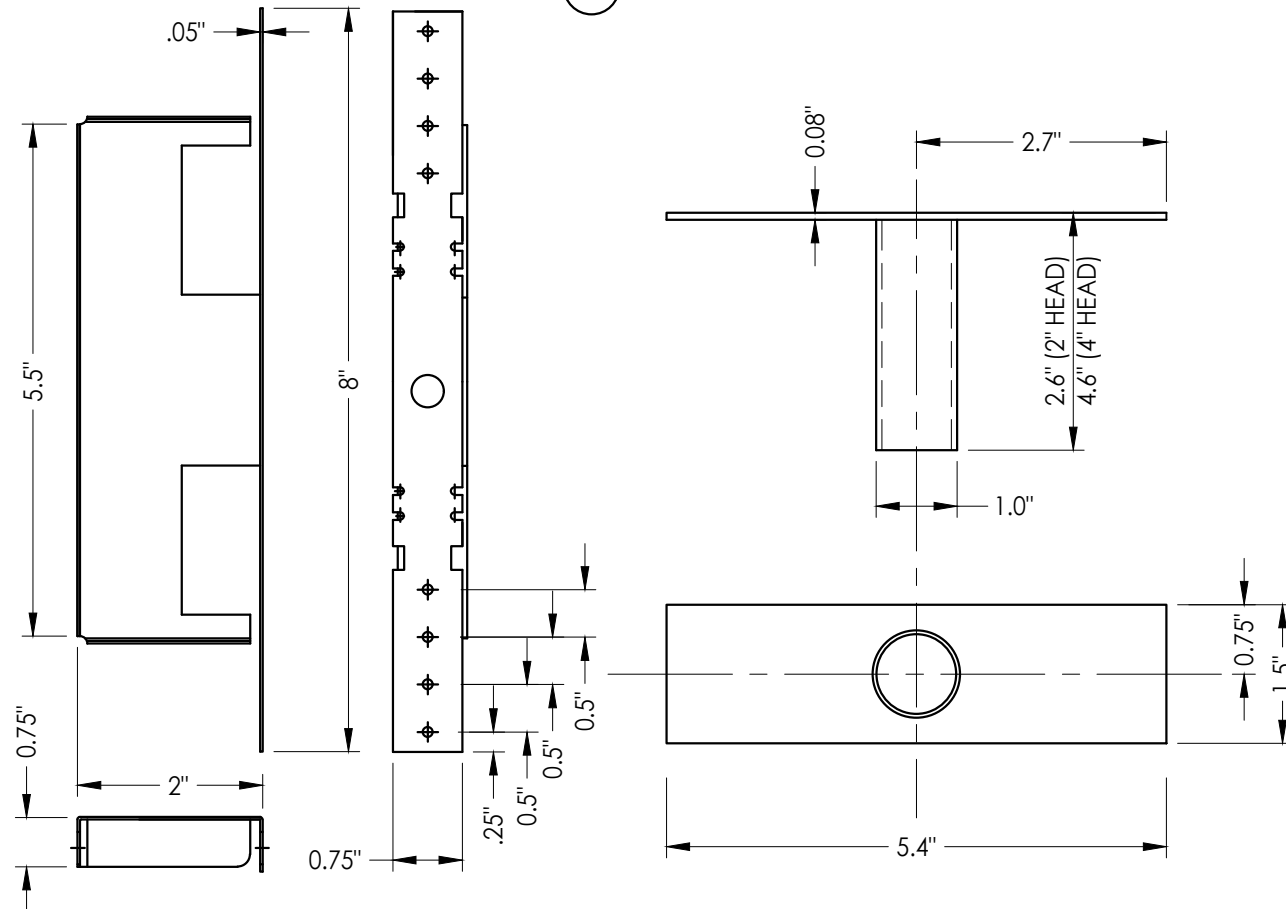


Z:\2023 FBC Drawings\DKS Steel Door & Frames Systems\FL-41130 R1\FL-41130.3-6.dwg

BILL OF MATERIALS		
ITEM #	DESCRIPTION	MATERIAL
B	2 X 4 FRAMING (SG >= 0.55)	WOOD
C	1/4" MAX. SHIM SPACE	-
D	1/4" X 2-3/4" PFH DeWALT OR ITW CONCRETE SCREW	STEEL
E	MASONRY - 3,000 PSI MIN. CONCRETE CONFORMING TO ACI 301 OR HOLLOW BLOCK CONFORMING TO ASTM C90	CONCRETE
F	3/8" PFH ITW DYNABOLT SLEEVE ANCHOR	STEEL
G	WOOD STRAP ANCHOR	STEEL
H	#8 X 1-1/2" PH WOOD SCREW (1-3/8" MIN. EMBEDMENT)	STEEL
J	MASONRY "TEE" ANCHOR	STEEL
1	DKS DOOR PANEL	-
4	DOOR TOP CHANNEL	STEEL
5	LOCK BOX REINFORCEMENT	STEEL
6	CLOSER REINFORCEMENT (11 GA.)	STEEL
7	DOOR BOTTOM CHANNEL	STEEL
8	WEATHERSTRIP - PEMKO 303A	NEOPRENE
9	TUBE ANCHOR	STEEL
10	#12-24 X 1" COMBINATION MACHINE / WOOD SCREW	STEEL
11	DOOR SWEEP - PEMKO 3151	PVC
13	WEATHERSTRIP - COMPRESSION BULB 1/4" X 1/2" (PEMKO S88)	NEOPRENE
15	#8-24 X 3/4" COMBINATION MACHINE / WOOD SCREW	STEEL
16	ANSI LATCH STRIKE	STEEL
17	DEAD BOLT STRIKE	STEEL
20	#12-24 X 1/2" PFH MACHINE SCREW	STEEL
21	4-1/2" X 4-1/2" X 0.125" TEMPLATE HINGE	STEEL
22	DOOR HINGE REINFORCEMENT	STEEL
25	HOLLOW FRAME 2"	STEEL
26	HOLLOW FRAME 4" HEAD	STEEL
27	FRAME LATCH STRIKE REINFORCEMENT	STEEL
28	FRAME HINGE REINFORCEMENT	STEEL
30	FRAME LATCH STRIKE REINFORCEMENT (MORTISE LOCK)	STEEL
40	INSWING THRESHOLD - PEMKO 156	ALUM
42	OUTSWING THRESHOLD - PEMKO 2001P	ALUM
70	CAL-ROYAL M SERIES MORTISE LOCK	-
71	CAL-ROYAL T300 SERIES DEADBOLT	-
72	CAL-ROYAL PIONEER SL/CSL SERIES CYLINDRICAL LOCK	-
73	CAL-ROYAL GENESYS SERIES CYLINDRICAL LOCK	-
74	CAL-ROYAL F7700/7700 SERIES RIM TYPE PANIC BAR	-
75	CAL-ROYAL F5000/5000 SERIES RIM TYPE PANIC BAR	-
92	PANIC BAR LATCH STRIKE PLATE	STEEL



**J** MASONRY 'TEE' ANCHOR



**G** WOOD STRAP ANCHOR

**9** TUBE ANCHOR

Documents Prepared By:  
Lyndon F. Schmidt  
P.E. No. 43409

**RW** BUILDING CONSULTANTS, INC.  
P.O. Box 230, Vairico, FL 33595  
Phone No.: 813.659.9197  
FBPE Registry No. 9813

PRODUCT:  
DKS  
STEEL COMMERCIAL DOOR

PART OR ASSEMBLY:  
BILL OF MATERIALS AND  
COMPONENTS

NO.	DATE	BY	LFS	FBC	REVISIONS
1	7/01/23				UPDATE TO 8TH ED. (2023)

DATE: 3/21/22  
SCALE: N.T.S.  
DWG. BY: LFS  
CHK. BY: RW  
DRAWING NO.: FL-41130.4  
SHEET 8 OF 8